

## Healing Parents

### Philosophy Six key elements

1. **Focus on family and community systems.** A system is a set of connected parts that work together to form a whole. In families, all members affect one another, in ongoing patterns and dynamics—an interpersonal dance. Children can only be understood and helped in the context of the social systems that affect their lives—family, community, school, and child welfare systems. Thus, the focus should not be on your child alone, but rather on the bigger picture, the family and social systems that shape everyone’s lives. Change the system and your child will change.
2. **Attachment is the core.** The type and quality of attachment formed in the early stages of development set the foundation for the rest of your life. Attachment is at the core of our beliefs, attitudes, emotions, behaviors, relationships, and values. The mind and brain of the baby and young child is formed, to a large extent, by emotional experiences with attachment figures. When attachment goes wrong with vulnerable infants and young children, numerous symptoms and conditions are likely to occur: depression, behavior disorder, anxiety, posttraumatic stress disorder (PTSD), attention deficit and hyperactivity disorder (ADHD), and antisocial personality. Disrupted and compromised attachment is often at the core of these problems. Thus, the “cure” resides in the experience of a healthy and healing relationship. You, the healing parent, hold the Key.
3. **Embrace the process of change.** When you understand the basic principles of change, you are able to promote growth in yourself, child, and family. You can only change yourself. However, you can create opportunities for others to change via your attitude and actions. Information and skills are essential for change. Using *Corrective Attachment Parenting (CAP)* ideas and skills, can build your confidence and lead to success. You must believe in the possibility of change: maintain a positive attitude, be a role model of change, reinforce little steps, focus on the future not only the past. Experience if the basis of change. Provide your child with new and positive learning experiences, resulting in new expectations (“I can trust you”) and positive feelings (“I feel secure and loveable”). Have a plan with specific goals and ways to achieve your goals. Change is a team effort, something you your spouse/partner, and child work together. Your relationship with your child is the primary vehicle for change. Change is not easy; it is a step-by-step, back-and-forth process, and it is normal to be anxious and ambivalent. Hope is essential. A positive expectation of success allows you to convey optimism and encouragement to your-self and your child.
4. **Attachment begins with the parents.** Your own family background and attachment history play a major role in the way you live your life, engage in relationships, and parent your children. Your mindset about attachment—the way you think about your own attachment history and deal with your emotional and relational issues—is the number one factor in determining your child’s type of attachment. This is true in biological, adoptive, and foster families. Wounded

(Continued page 4 )



Thank You ! 2  
Grants & Donations

3  
Workshop: Revised Attachment Disorder 202, November 12, 2011

Links / Resources 3

Continued from pg 1 4  
Healing Parents

Spotlight RTC's 5  
Cedar Springs  
Note from the CEO/President  
Lending Library Info

Camp for Attachment Disorder kids and their families. 6  
With Nancy Thomas

Cont. from 4- 7  
Healing Parents

Events & Training 8  
Special Thanks for the sponsorship and door prizes 9  
Bingo Mania

AABA's Mission 10



• Helping Families Stay Together

**Alaska Attachment & Bonding Associates depends solely upon yearly support from the community. We are proud to recognize the following individuals, businesses, and organizations for their support through Grants and Donations.**



### Lend a helping hand

**Alaska Attachment & Bonding Associates** is eligible under AS 43.23.062 to receive charitable contributions for 2012 as designated by PFD applicants electronic Permanent Fund Dividend applications.

Program: (Pick. Click. Give. )

Please help with our mission

**PICK. CLICK. GIVE** to:

**Alaska Attachment & Bonding Associates**



#### 2011

##### **Diamond:** (\$10,000 to \$24,999)

Alaska Mental Health Trust Authority (2010-11)

Mat-Su Health Foundation (2010-2011)

##### **Sapphire Circle:**(\$6,000 to \$9,999)

##### **Ruby Circle:** (\$2,500 to \$5,999)

AdoptUsKids (2010-2011)

##### **Emerald Circle:** (\$1,000 to \$2,499)

Susan and Dave Denton

Match with Susan Denton from BP

Jim Wardman

##### **Platinum Circle:**(\$500 to \$999)

Western Enterprises, Inc.

Totem Ocean Trailer Express, Inc (2010)

American Seafoods Company LLC (2010)

Barnard & Rachel Gottstein

BPOE Palmer Elks #1842

Cedar Springs Behavioral Health

Lee Reality, LLC

##### **Gold Circle:**(\$150 to \$499)

BP America Inc.

BP America Inc.

Karen Howes

Jim & Janet Faiks

No recognition wanted

Wilma Carr

Palmer Elks #1842

First National Bank (Craig Thorn)

Diversified Tires

##### **Silver Circle:**(\$50 to \$149)

Natalie J Beyeler, Dr.

Eleanor F. Oakley

Crystral Loncle

Gorilla Fireworks

##### **Bronze Circle:**(\$25 to \$49)

Weldin Construction

##### **Aluminum Circle:**(\$1 to \$24)

##### **In-kind Circle:**

Kaye Zwiacher MD

Terrilyn Wamser

Rosemary Burnett

Glacier Dietary Foods & Fitness

Sportsman's Warehouse

Flowers by Louise, Inc

Learning Essentials

Stanley Carpet Cleaner

Batteries Plus

Papa Murphy's Pizza

Body renew

Shake Your Day

Bouncin'Bears

Just Imagine toys

Guys & Gals Salon

Fish Creek Sporting Goods

All I Saw cookware

Hairport Salon

Alaska Shipping

The Dog wash

Three Bears Alaska, Inc

Pampered Chef-Karen

Pro-Lube car Wash

Jacobson's Greenhouse

Flipo's Pizza

Alaska Splendor Limousine

Geneva Woods Pharmacy

Derma Glow

Gelato Kudrino Artisan Italian Ice Cream

Valley Performing Arts

Spenard Builders Supply

Alaska Cheesecake

Sears Portrait Studio

##### **Volunteers**

Eleanor Oakley,

Jim Wardman

Karen Howes,

Laura Wagner

Brittany Blawn

Joyce Hance

Carol Rice

Terrilyn Wamser

##### **Special Thanks to**

*Mr. Howes* for donating his time.

*Karen Howes* for helping with Pampered Chef Fundraisers.

To all the Board Members and volunteers.

And thanks to: Bingo Mania for using our Gaming permit.



**Workshop: Revised Attachment Disorder 202**

~Reactive Attachment Difficulties with Siblings

~How to Defuse Situations

~Practical Tool Strategies

~Therapeutic Interventions

New information and video

**Time: November 12, 2011****Place: 101 W. Swanson Ave, Training Rm. 2, Wasilla, AK****Time: 8:45 am to 5:30 pm****Cost: \$150.00 Provided: Continental Breakfast, Lunch, Snacks****CEU: Alaska Commission For Behavioral Health /Alaska Center for Resource Families (foster credits)**

**Registration required: Online registration ([www.akattachment.org](http://www.akattachment.org)) (will not work with web-based accounts, g-mail, yahoo, etc), Or download form and mail to AABA, PO Box 872188, Wasilla, AK 99687, Or call 907-376-0366 and register over the phone. Web-site now has PayPal. You can register and pay by credit card through PayPal online at [www.akattachment.org](http://www.akattachment.org).**

**Special Thanks to**

~“Susan Denton and BP for the BP Matching funds”

**And**the matching funds from  
**BP America Inc****Great members of the  
AABA Board**

Workshops  
Are a fun way to  
learn!

**Resources and Links****TATTAC** Bernadine Janzen, MS, LPC;

Tattacbsj@gmail.com

**Attachment Disorder Network for parents;** [www.radzebra.org](http://www.radzebra.org)

Alaska Parent Line; 1-800-643-5437

**Alaska Center for Resource Families;**  
[www.acrf.org](http://www.acrf.org)**Alaska Children's Trust;**[www.alaskachildrenstrust.org](http://www.alaskachildrenstrust.org)**Families & Professionals Resources for the first three years of life;**[www.threetozero.org](http://www.threetozero.org)**American Family Advocacy Center;**[www.profane-justice.org](http://www.profane-justice.org)**For Grandparents raising grandkids;**[grands@voaak.org](mailto:grands@voaak.org) 1-888-522-9866**RAVEN Respite Parent Support Group,** subscribe at;[www.subscribe@yahoogroups.com](http://www.subscribe@yahoogroups.com)(To sign up for Online support group: call 907-357-6263 or Email: [princessbutercupp@yahoo.com](mailto:princessbutercupp@yahoo.com)) you will receive easy instructions on how to get on the site.**Mom2Mom/Dad2Dad parent support:**Support group line: 907-982-1948 Crystal  
[cloncle@mtaonline.net](mailto:cloncle@mtaonline.net)**RAVEN Respite Support** Melissa Jessup;  
[zeusl@mtaonline.net](mailto:zeusl@mtaonline.net)[princessbutercupp@yahoo.com](mailto:princessbutercupp@yahoo.com)**Court Appointed Special Advocates;**  
[www.alaskacasa.org](http://www.alaskacasa.org)**Attachment Disorder support group;**  
[www.adsg.org](http://www.adsg.org)**Child Welfare Information Gateway;**  
[www.childwelfare.gov](http://www.childwelfare.gov)**RAD Kid Organization;** [www.radkid.org](http://www.radkid.org)[www.sociallearning.com](http://www.sociallearning.com).[http://](http://www.fosterparentcollege.com/)[www.fosterparentcollege.com/](http://www.fosterparentcollege.com/)<http://thursdaygroup.blogspot.com>**Co-occurring Disorders Institute**CoDI; [www.codi-ak.org](http://www.codi-ak.org)**CCS Early Learning**<http://www.ccsalaska.org>**Raven Respite  
Workshop**

**September 30,**  
**2011**  
**was sponsored**  
**in part by**  
**AdoptUSKids**

**“Thank you**  
**AdoptUSKids**

“RAVEN  
Respite Striving to make a  
Difference for families



## **(Continued from Page 1) Healing Parents**

Children are experts at triggering unresolved issues and sensitivities left over from your childhood. By becoming self-aware—looking in the mirror—you will be proactive, not reactive; able to respond constructively and therapeutically to your child's angry controlling, and distancing behavior, rather than reacting in a destructive “knee-jerk” manner.

**5. Create a healing environment.** Parents cannot “fix” a child, but they can create and maintain the emotional, social, and moral climate in which children learn and heal. Healing parents understand they are in a therapeutic role. You are aware of the way you label and interpret your child's behavior, because those labels and perceptions guide your actions. You provide a balance of love and limits. Nurturance and compassion meet deep emotional needs and teach your child that heart-felt human connections are safe and rewarding. Structure, including limits, rules, and consequences, helps your child feel secure and learn from her mistakes. As a healing parent you maintain a mindset of opportunity rather than crisis. Stressful and challenging situations are viewed as opportunities for teaching and learning, rather than as crisis to be dreaded and avoided. You are proactive, not reactive; set the emotional tone of your family, maintain the rules, and provide a positive role model by remaining calm and not taking your child's behavior personally. You are parenting with intention; you have a plan and a purpose, and work deliberately toward achieving your goals. You respond to your child in ways that do not reinforce his script—*change the dance, change the child*. You look beyond your child's negative behaviors and understand the beliefs and mindset at the root of his actions. You help your child develop more hopeful and healthy core beliefs. Your primary goal is connection, not control. The relationship you establish with your child is the vehicle for teaching about the value of secure, safe, and loving connections. You show by example how to effectively communicate, cope with stress, manage emotions and conflict, solve problems, and care about yourself and others. You have confidence that you can promote positive changes in your child's mind, brain, and behavior by maintaining a healing environment.

**6. Connection is your goal.** A person's philosophy and beliefs determine what he does and how he does it. In the past some therapists believed wounded children must release their rage and submit to the therapists' authority in order to become vulnerable and then learn to trust. They believed anger was the primary cause of defiance. This led to a parenting approach that emphasized control over the child and a focus on “Who's the boss?” Our belief, as well as many others in the field, is that therapists and parents become trusted figures for wounded children by being sensitive and responsive to their needs, providing appropriate limits and consistent structure, and being empathic, supportive, nurturing, and appositive role model. We believe fear is the primary cause of defiance—fear of additional loss, pain, and maltreatment. Our parenting approach emphasizes respect reciprocity, and the creation of deep emotional connections. This helps children develop positive core beliefs, internalize parental values, establish trust, and become motivated to be compliant rather than deviant. In other words, children need connection, not control.

Helping your child is not just about learning techniques. To be a healing parent you need the right attitude.

Continued on page 7

## R.T.C. Spot Light

**Cedar Springs provides both inpatient and outpatient psychiatric treatment for individuals of all ages. The facility is at the foot of beautiful Cheyenne Mountain in Colorado Springs, Colorado.**

### **New Programs:**

**Connections: Program for children Challenged with Attachment Disruption and Reactive Attachment Disorder.**

**Southgate School Day Treatment Program: Year-Round Licensed Special Education/Alternative School for Children and Adolescents.**

**Mountain View Place Program: Positive residential treatment program for young people challenged with general psychiatric disorders.**



**Cedar Springs  
Behavioral  
Health System**



Cedar Spring Behavioral Health System  
2135 Southgate road  
Colorado Springs, CO 80906  
Phone: 719-633-4114  
Toll Free 800-888-1088  
Www.cedarspringsbhs.com

### **A Word from our CEO/President**

**It's already October, how time flies when your having fun.**

**Happy Holiday's**

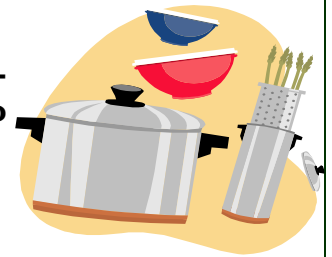
**Eleanor Oakley, MS, CEO/President**



### **Pampered Chef "Pampered Chef Consultant- Karen Howes"**

**You may order on-line at [www.pamperedchef.biz/karenh](http://www.pamperedchef.biz/karenh) anytime or request a catalog from Karen, at 315-1425 or email request to [karenh@gci.net](mailto:karenh@gci.net).**

**Call Karen to find out what the guest special is or go on line.**



**Lending Library** Located at: 619 S. Knik Goose-Bay Road, Suite J, Wasilla, AK 99654

Open: 8:00 a.m. to 4:00 p.m. - Monday though Friday

Books are listed on AABA's web-site: [www.akattachment.org](http://www.akattachment.org)

Please come in and browse, check some books out, to read at home at your leisure, then either bring them back or mail them in. If you cannot get to the lending library call and request the books you would like to read, and we will mail them to you. Please call Laura at 907-376-0366 with any questions.

***LENDING LIBRARY MADE POSSIBLE IN PART BY:***

*THE ALASKA MENTAL HEALTH TRUST AUTHORITY*

*AND MAT-SU HEALTH FOUNDATION*

**The TRUST**  
The Alaska Mental Health  
Trust Authority



**Mat-Su Health  
Foundation**

## **“Family Development Camp” for Attachment Disorder Kids & Families” with Nancy Thomas as camp director and parent trainer.**

**The camp will be May 13 to 19, 2012. The camp ground will be North Star Bible Camp in Willow. We need 12 volunteers , one volunteer for each family. The local therapists, teachers, school counselors, parole officers, classroom aides and psychology students could learn new techniques and understand the families they work with more deeply. Needed: 12 volunteers and 12 families**

**This is a very special event, the kids that very seldom get a chance to go to camp with their families, and the families get a chance to bond with their kids with the direction on Nancy Thomas.**

The one week Family Camp was designed to help families to bond and help children with ADD, ADHD, RAD, ODD, OCD, PTSD, Tourette’s, Asperger’s, the effects of early trauma and adoption and Bipolar disorder. With RAD so common and such a huge issue we have mainly focused on those children but many have multiple diagnosis. The focus of the camp is to increase love, laughter, bonding, self-control, and child conscience development in the family.

The goal of the Camp is to teach parents of emotionally disturbed children how to help their child to be successful. Each morning the parents attend a training, encouragement, support session. They then practice the new skills with staff support to fine-tune the interventions throughout the day.

Afternoons are spent interacting and having fun together with bonding, cooperation and trust building activities as the parenting skills are put into place.

Camp: cabins secure enough to provide safety for the emotionally disturbed child to keep them from sneaking out at night and hurting others or themselves.

Each family needs their own cabin. Families do not share common areas in their cabins.

Staffed kitchen cleaning/dishwashing crew separate from the camp volunteer team. The dining room is large enough to comfortably accommodate all families and camp staff during meals.

A training room that can seat all campers and staff.

A intervention room where the sound will not create a disturbance to any activities or people sleeping nearby. This room is for children having meltdowns or needing quiet time to shift gears and get back on track.

Entire camp located where the sound will not concern nearby residents. Privacy and a feeling of safety are essential for these children to heal as well as to avoid embarrassment to the parents from others who don’t understand. To protect the privacy of the attending families, this group must be the only ones using the facility at that time.

Any adults (other than the parents) that will be interacting with children must attend the two day training. We will need a minimum of one volunteer team member, full time, per family for interventions and activities. Nancy will bring a licensed therapist, who is well seasoned and trained as an intervention staff person. We will train 10 to 20 volunteers to do the work. Cost is \$750 per person. If you have a trailer or RV we have 3 spaces available, your price will be \$550 per person ( a minimum of five per RV). **There is a \$500 non refundable deposit required to hold your registration/cabin. (some packets have been sent out, cabins are blocked off by a minimum of occupants per cabin, if all the cabins for three people have been assigned, and you have a party of three, you will have to go with a cabin of four and pay the different, which would be for four occupants.) Cabins are assigned when the registration and deposit is received.**

**If you are just interested in attending a Nancy Thomas one day workshop (Rebuilding the Broken Bond), May 12, 2012, the fee will be \$150. Please register soon: Seating is limited.**

**Call Laura @ 907-376-0366.**



(Continued from page 4) Healing Parents

However, being positive and confident is very difficult when feeling alone, confused, helpless, and exhausted. Foster parents tell us they do not receive the training and support to deal with very angry and defiant children. Adoptive parents express frustration and anger because they were not given much information about their child before adoption, and were not provided with parenting education or therapy services following adoption.

Parents and caregivers are often angry at “the system” and don’t know where to turn and who to trust. They are confused due to conflicting advice about parenting and treatment, and baffled by their children’s behavior. Numerous books offering different parenting philosophies and strategies perplex them. They are worn-out due to the constant demands and challenges and often feel guilty and inadequate in their parenting roles. Over time, high levels of stress associated with relationship conflicts create a climate of tension, despair, and hopelessness in the family (Levy & Orlans 2000a).

You need patience, confidence, and love to be a healing parent, but you may be too frustrated and fed up to respond therapeutically. It is normal to not want to open your heart to your child, fearing more rejection, grief, and abuse. However, with the right information, skills, and support, parents do become more emotionally available, confident, and successful.

The information was found in “Healing Parents” Helping wounded children learn to trust & love., by Michael Orlans & Terry M. Levy.

Great book!!!

AABA has copies in the Lending Library.

Permission to Print was granted by:

Child Welfare League of America, Inc.

1726 M. Street NW, Ste 500

Washington, DC 20036

[Www.cwla.org/pubs](http://www.cwla.org/pubs)

"Copyright, CWLA. Reproduced with permission of the Child Welfare League of America ([www.cwla.org](http://www.cwla.org))."  
*Healing Parents* can be purchased from CWLA’s webstore at [www.cwla.org/pubs](http://www.cwla.org/pubs).

About the Authors:

Michael Orlans, M.A., and Terry Levy, Ph.D., authors of the best selling title *Attachment, Trauma, and Healing* are internationally renowned trainers who have taught throughout the United States, Canada, Great Britain, and Japan. Both authors are the cofounders of the Association for Treatment and Training in the Attachment of Children (ATTACH). Currently they are co directors of the Evergreen Psychotherapy Center and the Attachment Treatment and Training Institute in Evergreen, Colorado.



## Alaska Attachment & Bonding Associates: Workshops

### “Revised Attachment Disorder 202”

**When: November 12, 2011 Where: 101 W. Swanson Ave. Training, Rm. 2, Wasilla, AK**

**Time: 8:45am to 5:30 pm Cost: \$150.00 CEU's Provided: Continental Breakfast, Lunch, Snacks**

**Scholarships for Caregivers & their Natural Supports (when available)**

**REGISTRATION REQUIRED: Register by Phone: 907-376-0366 Fax: 907-376-0966**

**online registration @ [www.akattachment.org](http://www.akattachment.org) (PayPal available)**

**(will not work with web based email addresses, such as hotmail, g-mail, yahoo)**

---

### Therapeutic Parenting Specialist “Nancy Thomas”

**One day workshop “Rebuilding the Broken Bond”**

**Date: May 12, 2012; Fee will be \$150; Registration Required (limited seating) Call Laura @ 907-376-0366.**

**Sponsored by: Alaska Attachment & Bonding Associates**

---

**Mat-Su Training Oct-Dec 2011: Required Core Training for Resource Families:**

**Regular Core Training:**

*Tues nites 6:00-9:00 PM Oct 4th, 18 hr class.*

**Core for Relatives: Mondays Nov 7th, 14th, 21<sup>st</sup> from 6:00-9:00 PM total 9 hrs.**

**Core for Relatives: Mondays Dec 5<sup>th</sup> and 12<sup>th</sup> from 9:00-1:00, 8 hrs.**

*ACRF can bring Core Training to you! If there is a need we can schedule a 12 hr version at your convenience, nights or on the weekend. Call 376-4678 to schedule this option. □ Adopting Through OCS class Tues Oct 11th 6:00-9:00, Wed Nov 16<sup>th</sup> 6:00-9:00 PM or Thurs Dec 15<sup>th</sup> 9:00-noon (3 hr class)*

**Building Families through Adoption, 9:00-noon, Mon and Thurs Oct 17<sup>th</sup>, 20<sup>th</sup>, 24<sup>th</sup>, & 27<sup>th</sup>.** *Building Families is an educational, interactive workshop addressing the core issues in adoption. The sessions incorporate birth and adoptive panel speakers, media clips, exercises and group discussions. Building Families is offered free of charge to pre- and post-adoptive families and fulfills the Hague training requirements for International Adoption.*

**FASD classes for resource families, youth, and workers: Video Days:** *You are invited to come to ACRF and watch videos with other foster/adoptive parents in a relaxed setting. We will serve refreshments, but there is no childcare available. You do not have to stay the entire time but you must pre-register by calling 376-4678. Thurs Aug 4th, 9:00-2:00- Culture and Identity- Tues Oct 25th, 9:00-2:00- Childhood Trauma-- Thurs Nov 10th, 9:00-2:00, Adoption--Thurs Dec 1st, 9:00-2:00, Children are Worth It.*

*ALL Classes will be held at the ACRF Wasilla office in the Brentwood Plaza on the Palmer Wasilla Highway unless otherwise noted. Turn on Shennum **and drive behind the post office to the rear of the building, Ste. A2. Pre-registration is required call 376-4678 or email [bwoodin@nwresource.org](mailto:bwoodin@nwresource.org)***

**Rural Teleconference Training and Support: PM**

**Tues Oct 11<sup>th</sup>, Childhood Trauma, noon-1:00**

**Wed Oct 12<sup>th</sup>, More Childhood Trauma, 7:00-8:00 PM**

**Wed Nov 2<sup>nd</sup>, Adoption Issues, 7:00-8:00 PM**

**Tues Nov 8<sup>th</sup>, Rejecting Behaviors of Children in Care, noon-1:00, John Bennett**

**Wed Dec 7<sup>th</sup>, Advocacy, 7:00-8:00 PM**

**Tues Dec 13<sup>th</sup>, Stress, noon-1:00**

*The monthly Rural Teleconference is designed for anyone living outside of Anchorage, Fairbanks, Juneau, Wasilla or Palmer although we allow others to participate. Families may participate by dialing 1-888-626-7441 and when asked enter the code: 9939775#. If you phone in before the group leader you will hear music, please stay on the line. For more information contact [bwoodin@nwresource.org](mailto:bwoodin@nwresource.org) or call toll-free 1-800-478-7307.*

---

### “R.A.V.E.N. Respite Project”

*If you would like to participate in the upcoming RAVEN Respite project: there is still time to sign up, we have 5 providers and 6 respite families interested so far. (respite training workshop is a must) respite meetings will be booked before and after workshops, and when ever deemed necessary by the families.*

### “Mom2Mom/Dad2Dad Parent support group”

*Mom2Mom/Dad2Dad parent support group meets the first Monday of every month. From 10:30am to 12:00. At the AABA office, 619 S. Knik Goose-Bay Road, Ste J. Wasilla. No registration is required, just come and talk with the other parents that have the same concerns as you do. Coffee and tea is served.*

*If you have any questions, please e-mail [laura@akattachment.org](mailto:laura@akattachment.org) or call 907-376-0366.*



**Workshop: August 27, 2011 Revised Defusing Strategies~****Is sponsored by: "American Seafood -TOTE - Cedar Springs Behavior System"****Thank you for your support!!!****"A Special Thanks for the Door Prizes from:"**

<b>Flowers by Louise, Inc:</b>	<b>376-4939</b>
<b>Learning Essentials:</b>	<b>357-3990</b>
<b>Batteries Plus:</b>	<b>376-1181</b>
<b>Papa Murphy's</b>	<b>376-3696</b>
<b>Just Imagine Toys:</b>	<b>357-1543</b>
<b>Guys &amp; Gals Salon:</b>	<b>376-2320</b>
<b>Fish Creek Sporting Goods:</b>	<b>373-2650</b>
<b>All I Saw Cookware:</b>	<b>376-3177</b>
<b>Pampered Chef-Karen:</b>	<b>357-1045</b>
<b>Pro-Lube Car Wash:</b>	<b>376-5823</b>
<b>Flipo's Pizza</b>	<b>357-0020</b>
<b>Alaska Cheesecake</b>	<b>373-3392</b>
<b>Alaskan Splendor Limousine</b>	<b>376-3023</b>
<b>Valley Performing Arts</b>	<b>373-0195</b>
<b>Derma Glow</b>	<b>367-7554</b>
<b>Geneva Woods Pharmacy</b>	<b>376-8200</b>
<b>Gelato Kudrino Artisan Italian Ice Cream</b>	<b>357-0066</b>
<b>Spenard Builders Supply</b>	<b>376-5237</b>

**"Bingo Mania" supports "non-profits" by using their gaming permits.****(Non-profits are Alaska Attachment & Bonding Associates & Wasilla Senior Center)****Closed: Monday; Tuesday and Wednesday:****Opened: Thursday: one session starts @ 6:30 p.m.****Friday: two sessions starting @ 6:30 & 10:30 p.m.****Saturday: two sessions starting @ 6:30 & 10:30 p.m.****Sunday: one session starting @ 6:30 p.m.****6445 E. Blue Lupine Drive Wasilla, Alaska 99654,****Phone: 907-376-4816****(Located on Parks next to Alaska Sales and Service).**

## Alaska Attachment & Bonding Associates

City Center Business Park  
619 S. Knik Goose-Bay Road, Ste J  
Wasilla, AK 99654

Phone: 907-376-0366

Fax: 907-376-0966

E-mail: [laura@akattachment.org](mailto:laura@akattachment.org)



AABA

Web Site

[www.akattachment.org](http://www.akattachment.org)

### About Alaska Attachment & Bonding Associates

AABA is a non-profit organization that provides education, training, support and advocacy for kinship, adoptive and foster families who care for children with emotional disorders, such as Reactive Attachment Disorder (RAD), and professionals who work with this population of children.

AABA's area of Focus: **PREVENTION** of abuse/neglect

**PLACEMENT** information

**TRAINING** in Attachment

**COMMUNITY** Resource information

### WHAT drives AABA?

AABA is passionate about traumatized children.

AABA has first hand experience with Attachment Disorder children and knows the special care and treatment needed to help these children learn love and trust.

Left untreated, children with Attachment Disorder and other emotional disorders are often times shipped to out-of-state Residential Treatment Centers (RTC's), and are likely to become emotionally disturbed adults, unemployable, likely to be involved in drugs, alcohol or other illegal activities.

Attachment Disorder children place a huge impact in dollars, stress, crime, and livability in the Mat-Su Borough and throughout Alaska.

### WHY should you care?

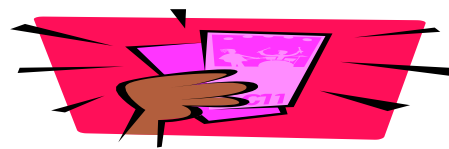
Because this is a preventable disorder and will take the community working together! AND. "**BECAUSE THIS IS YOUR HOME!**"



The Bingo Mania is a light yellow building away from all the hustle and bustle of the bowling alley. A much more pleasant and serene atmosphere. There is a Bingo Mania Deli for all the hungry Bingo people. Bring a friend and help celebrate this new kind of Bingo establishment. Bingo Mania is located at 6445 e. Blue Lupine Dr. Wasilla. 907-376-4816, On the frontage Rd by Alaska Sales & Service.



## NEW PULL TAB STORE!!!!



## “PULL TABS MANIA”

Mile 49 Parks Hwy

Meadow Lakes

Opened 11:00am to 9:00pm

(helping the non-profits)